



# ActivSlate 60

User Guide

The **ActivClassroom** *by* PROMETHEAN



## **Copyright Information**

©2010 Promethean Limited. All rights reserved.

This guide is distributed for the ActivSlate 60. It may only be reproduced for use within the institution in which the product is used. For use outside of your institution, no part of this guide may be reproduced, transmitted, stored in a retrieval system or translated into any other language without the prior permission of Promethean Limited. Please note that the content in this guide is protected under copyright law. Although every care has been taken in the compilation of this guide, Promethean Limited accepts no responsibility for errors or omissions.

|                   |   |
|-------------------|---|
| Welcome           | 4 |
| Features          | 5 |
| Registration      | 6 |
| Compliance        | 7 |
| Technical Support | 8 |

Thank you for purchasing an ActivSlate 60 from Promethean. We recommend using ActivSlate 60 with our latest software, ActivInspire Professional Edition, which can be downloaded from [www.PrometheanPlanet.com/ActivInspire](http://www.PrometheanPlanet.com/ActivInspire)

Acquire thousands of great lessons, resources and teaching ideas from our free online community, Promethean Planet. While you're there, enroll in one of our ActivLearning courses. [www.PrometheanPlanet.com/ActivLearning](http://www.PrometheanPlanet.com/ActivLearning)

Part of the Activclassroom, ActivSlate 60, along with ActivInspire, was designed to be an innovative and integrated whole group learning environment which encourages active student participation in lessons.

For more information on the ActivClassroom by Promethean and other products available please visit [www.PrometheanWorld.com](http://www.PrometheanWorld.com)

## **BATTERY AND CHARGING INFORMATION**

The ActivSlate 60 is powered by a rechargeable battery. It must be charged before it is used for the first time.

The ActivSlate 60 series battery is charged by a USB A – micro USB cable supplied in the box. An up-to-date version of Promethean's ActivDriver must be installed on the computer to charge by USB. The ActivDriver is available for download from [www.PrometheanPlanet.com/support/](http://www.PrometheanPlanet.com/support/)

Alternatively, a universal input power supply unit, branded Promethean and type FW7650L/05 can be purchased separately. This is the only approved power supply unit. Do not connect any other power supply unit to the ActivSlate 60.

The rechargeable battery will eventually wear out. Replace only with approved ActivSlate 60 batteries available from Promethean.

Caution: risk of explosion if battery is replaced by an incorrect type. Dispose of used batteries according to the instructions

The power supply unit has been fitted with an interchangeable mains plug which is clipped into the main body. Where an interchangeable plug is not available for your country, an adapter is supplied with a suitable mains lead.

The power supply unit may be supplied with more than one interchangeable plug/adaptor and mains leads. This is to accommodate countries with more than one type of mains outlet socket.

## **SAFETY INFORMATION**

Only use the interchangeable plug or adapter plus mains lead which is compatible with your mains outlet socket. Do not attempt to modify the mains lead. If you are unsure of the electrical compatibility of your equipment, please contact Promethean or an authorised Promethean service agent before attempting to connect the power supply unit to the mains supply.

The power supply unit does not contain any user serviceable parts and must not be opened. If you suspect that the power supply unit is faulty, you should contact an authorised Promethean service agent to obtain a replacement.

Inspect the power supply unit for physical damage to the casing before use. If damage is apparent, take care to avoid contact with any potentially live parts.

Disconnect the power supply unit from the mains supply at the wall socket and contact Promethean or an authorised Promethean service agent for advice.

Except for the rechargeable battery, the ActivSlate 60 does not contain any user serviceable parts. You should not attempt, under any circumstances, to gain access to internal parts of the unit.

If the ActivSlate 60 is suspected to be faulty or damaged contact Promethean or an authorised Promethean service agent for advice.

## **ENVIRONMENTAL CONSIDERATIONS**

Operating Temperature Range: +2°C to +45°C  
Storage Temperature Range: -10°C to +60°C  
Humidity (non condensing) 20% to 90%

The ActivSlate 60 contains a Lithium-ion battery. Do not incinerate. Return to an authorised Promethean service agent for safe disposal.

# Features

## ABOUT THE ACTIVSLATE 60

**Registration button**—After starting registration from ActivInspire, click here with the ActivPen.

**Power button (at rear of ActivSlate 60)**—Press, hold and release. When the ActivSlate 60 is not in use it powers off after three minutes.

**PIN code buttons**—Click three buttons with the ActivPen to enter the code from ActivInspire.

**Charging socket**—Connect the USB cable here for around three hours to charge the battery when “Recharge Battery” is displayed. Ensure that the battery is charged for at least 1 hour before first use.

**Drawing area**—Click and drag with the ActivPen to control your ActivBoard from anywhere in the ActivClassroom.

**LCD screen**—Shows wireless signal strength, battery charge, registration. Touch-menu lets you change settings.



## ABOUT THE ACTIVHUB

**(NOT SUPPLIED, AVAILABLE FOR PURCHASE SEPARATELY)**

Function indicator light flashes red when powered from the computer and flashes green when in use.

Antenna should be raised and in clear view of all ActivClassroom components.

Connect ActivHub to a USB socket on your computer. Use the USB extension cable if necessary.

Using the stand will ensure a stable position for the ActivHub.



STEP 1

In the ActivInspire Voting Browser, select **Device Registration**.



STEP 4

A PIN code and instructions are displayed in the next window.



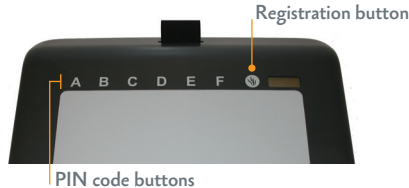
STEP 2

In Device Registration, select **ActivSlates** and click **Register**.



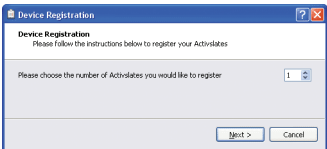
STEP 5

Click once on the **Registration button** on the ActivSlate 60 and enter the PIN code from ActivInspire by clicking the PIN code buttons on the ActivSlate 60.



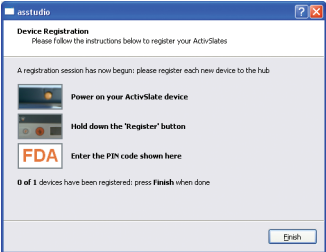
STEP 3

To register one ActivSlate 60, select the number 1 and click **Next**.



STEP 6

In ActivInspire, click **Finish**. The ActivSlate 60 LCD screen should display 'REGISTERED'.



# Compliance

## UNITED STATES OF AMERICA

This device complies with Part 15 of the FCC rules. Operation is subject to the following two conditions:

1. This device may not cause harmful interference.
2. This device must accept any interference received, including interference that may cause undesired operation.

Changes or modifications to this equipment not expressly approved by Promethean may void the user's authority to operate this equipment.

For non-intentional radio parts, this equipment has been tested and found to comply with the limits for a Class B digital device, pursuant to part 15 of the FCC rules. These limits are designed to provide reasonable protection against harmful interference in a residential installation. This equipment generates, uses and can radiate radio frequency energy and, if not installed and used in accordance with the instructions, may cause harmful interference to radio communications. However, there is no guarantee that interference will not occur in a particular installation. If this equipment does cause harmful interference to radio or television, which can be determined by turning the equipment off and on, the user is encouraged to try to correct the interference by one or more of the following measures:

Reorient or relocate the receiving antenna.

Increase the separation between the equipment and receiver.

Connect the equipment into an outlet on a circuit different from that to which the receiver is connected.

## CANADA

This device complies with RSS-210 of Industry Canada and is subject to the following two conditions:

1. This device may not cause harmful interference.
2. This device must accept any interference received, including interference that may cause undesired operation.

Changes or modifications to this equipment not expressly approved by Promethean may void the user's authority to operate this equipment. This Class B digital apparatus complies with Canadian ICES-003.

## UNITED KINGDOM

### Declaration of Conformity

Promethean hereby declare that the device is in compliance with the essential requirements of the

RTTE directive 1999/5/EC. Please contact Promethean for a copy of the Declaration of Conformity if required.

### Radio Interface

The radio interface on this product is intended for use with other Promethean radio devices for operation in the following countries:

Austria, Belgium, Bulgaria, Cyprus, Czech Republic, Denmark, Estonia, Finland, France, Germany, Greece, Hungary, Iceland, Ireland, Italy, Latvia, Lithuania, Luxembourg, Malta, Netherlands, Norway, Poland, Portugal, Romania, Slovak Republic, Slovenia, Spain, Sweden, Switzerland, United Kingdom.

### Waste Electrical and Electronic Equipment (WEEE)

For more information concerning the correct disposal of this product, please contact your Promethean reseller.

# Technical Support

**KNOWLEDGEBASE**

[www.prometheankb.com](http://www.prometheankb.com)

**USER GROUP FORUM**

[www.prometheanplanet.com/forum](http://www.prometheanplanet.com/forum)

**[www.PrometheanWorld.com](http://www.PrometheanWorld.com)**

